

## ON BOARD THE CELEBRITY INFINITY



The 90,940-ton, 2,170-passenger Celebrity Infinity is one of Celebrity Cruises' four vessels known as Millennium-class. That means they have some of the line's signature features -- lots of specialty restaurants, a OneSpaWorld spa, a gorgeous indoor Solarium and a variety of cabin classes. The Celebrity Infinity is a ship for people who like to linger over dinner, lounge while listening to music, take in a show, or simply relax while observing the grandeur and beauty of God's creation. The Celebrity Infinity is perfect for transporting Bible students to some of the most iconic

cities and islands where the apostle Paul and other first century Christians took the gospel of Jesus Christ to the citizens of the Roman Empire.

### MEET YOUR HOSTS AND GUIDES: JOHN AND CARLA MOORE

The Bible Lands Studies Program is organized through Bible Land Passages, a ministry of John and Carla Moore. John has been actively involved in ministry and Christian education since 1987 and is currently an instructor at Bear Valley Bible Institute International, where he teaches a variety of textual classes along with a course on Bible Geography and Archaeology. Having studied at Jerusalem University College, worked on archeological digs, and traveled widely in Israel, Greece, Turkey, Jordan, and Italy, John offers a unique perspective on the relationship between the Land of Israel and the Biblical Text. Carla teaches in the women's program at Bear Valley Bible Institute and frequently teaches women's groups in various venues. She is founder of the "Write On My Heart Every Word" scripture writing ministry and is co-host of the weekly podcast "Looking Up! with Kathy and Carla." John and Carla are also the founders and film directors of the Bible Land Passages documentaries series and Connection videos available on several media platforms.




# IN THE STEPS OF PAUL

AEGEAN CRUISE AND LAND TOUR  
MARCH 26 - APRIL 8, 2025

BIBLE PASSAGES



- \*ATHENS \*PHILIPPI
- \*RHODES \*CYPRUS
- \*THESSALONIKI
- \*CRETE \*CORINTH AND MORE

### A PASSAGE TO UNDERSTANDING AND ENRICHMENT

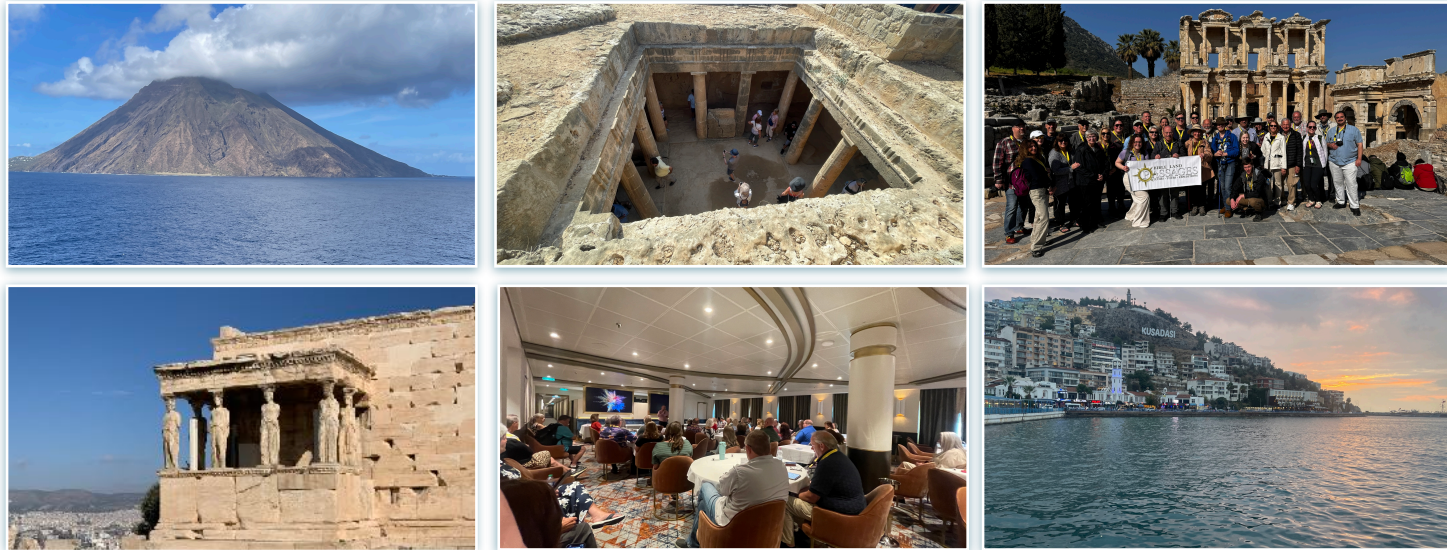
There is no way to adequately describe what traveling to biblical sites will do for you, both spiritually and educationally. On this incredible journey, you will walk in the steps of Paul and other great men and women of faith. You will, see historic sites in Greece, explore ancient ruins in the ancient province of Asia, and much, much more. Our highly unique program is designed to bring color, clarity, and a deeper understanding of the many customs, words, and practices of the people and settings of the Bible story and its historical and geographical context. The information



and experiences gained from this trip will place you in a better position to understand the biblical text, share the word, defend the faith, and evangelize the lost. You will grow at an exponential rate, both in your understanding of the Bible, and in your own personal walk of faith. You will never look at the Bible in the same way again. Join with us on this incredible journey. Relax and let us do the work while you enjoy the trip of a lifetime. Make new friends and travel to these historically important places and beautiful locations, all while in the company of fellow brothers and sisters in Christ.



*Guiding People to Jesus*



## ITINERARY HIGHLIGHTS

### Wednesday, March 26

Fly from U.S. to Athens  
DFW DL 356 at 12:00 PM  
JFK DL 202 at 6:30 PM

### Thursday, March 27

Arrive in Athens  
Group DL 202 arrives 10 AM  
Walking tour of Athens 4 pm  
(Overnight in Athens)

### Friday, March 28

Free Morning in Athens  
Luxury bus transport to Piraeus  
Bible Places Seminar  
(Overnight on Celebrity Infinity)

### Saturday, March 29

Arrive at Thessaloniki  
Full day tour - See Philippi,  
Neapolis, Amphipolis  
(Overnight on Celebrity Infinity)

### Sunday, March 30

Tour Thessaloniki,  
Archaeological Museum, Arch  
of Galerius  
Evening worship aboard ship  
(Overnight on Celebrity Infinity)

### Monday, March 31

Arrive at Kusadasi  
Tour Ancient Ephesus  
(Overnight on Celebrity Infinity)

### Tuesday, April 1

Free Day at Sea  
Optional Bible Places Seminar  
(Overnight on Celebrity Infinity)

### Wednesday, April 2

Arrive at Cyprus  
Tour Paphos  
Tomb of the Kings  
(Overnight on Celebrity Infinity)

### Thursday, April 3

Free Day at Sea  
Optional Bible Places Seminar

### Friday, April 4

Arrive at Rhodes  
Tour Lindos and Temple of Dionysus  
Medieval City Grand Masters Palace  
(Overnight on Celebrity Infinity)

### Saturday, April 5th

Arrive Heraklion, Crete  
Free Day on your own  
-explore, shop, and dine!

### Sunday, April 6th

Arrive Piraeus, Greece  
Drive along Saronic Gulf  
Visit Corinth Canal  
Archaeological site at Corinth  
Cenchrea  
Worship at the church of Christ  
in Athens  
(Overnight on Celebrity Infinity)

### Monday, April 7th

Disembark for excursion into  
Athens  
See the Acropolis,  
Mars Hill,  
Greek Agora

### Tuesday, April 8th

Early morning departure for  
Airport.  
Group Flight Departs 6:30 am  
Air France 1033  
(JFK group arrives 12:45  
p.m.; DFW group arrives 1:45  
p.m.)

## COST AND REGISTRATION



Your total cost will depend on different factors (for example, whether you book your own airfare or fly with the group.) Your cruise price will also vary depending on your choice of cabin on board the ship (interior, window view, balcony, etc.) See below for cost estimates.

**Cruise cost:** This amount depends upon the date of booking and class of cabin. Reservations for the cruise must be made through **John Voss with Keys to Dream Travel (270-881-7711 or [john@keystodreamtravel.com](mailto:john@keystodreamtravel.com))**. Guaranteed Bible Land Passages group rates are available for a limited time. However, prevailing rates

will apply. BLP Group prices are based on double occupancy (total for the room, not per person) and include the Beverage Package, Wi-Fi, prepaid gratuities and **\*refundable** deposit of \$900 (terms and conditions apply) \*Final Payment is due by December 28, 2024, **after which cancellation penalties will apply.** \*Please see [celebritycruises.com](http://celebritycruises.com) for full terms and conditions **Call John Voss for your quote.** He will give you a complete breakdown on pricing and careful analysis of what to expect. PLEASE NOTE: many advertisers offer "lower" rates or deals but be sure to read the fine print and hidden costs. You can trust our brother in Christ to give you an honest price with a full explanation of all costs. Call John Voss at 270-881-7711 to register for the cruise; see paragraph below for excursion information.



### Bible Passages Excursion Package:

The full land excursion package is **estimated \$1595 per person** and Includes \*two nights at a four star hotel in Athens with daily breakfast buffets (rates based on double occupancy - for a single room by yourself, add \$315). \*BLP guided tours and stops in Athens, Philippi, Kavala, Amphipolis; Thessaloniki, Ephesus, Rhodes, Cyprus; Corinth, the Corinth Canal, and Cenchrea. \*Luxury coach transportation to and from the Athens hotel and port \*Pre tour lectures and session overviews aboard ship \*Hotel city taxes \*All land transportation and tours as outlined in the itinerary by deluxe motor-coach including air conditioning \*Highway tolls \*Bus drivers' portage.\*Comprehensive sightseeing tours and activities with the services of local government licensed, English-speaking, Biblical focused guides \* All entrance admission tickets to the archaeological, historical sites and museums as outlined in the itinerary (as per 2024) \*Whisper headsets during the guided tours. \*English-speaking escort/representative during the transfers. \*Hotel service charges, local taxes and VAT. **Excursion cost is to be paid to Bible Passages.** To register, there is a **\$300 per person nonrefundable deposit** (visit [www.biblepassages.net](http://www.biblepassages.net) to register for excursion package. or call John Moore at 512.695.5099). Exclusions apply - see [www.biblepassages.net](http://www.biblepassages.net).

**Bible Passages Group Airfare Option:** Round trip from DFW to Athens (estimated **\$1,570 pp**) OR round trip JFK to Athens (est. **\$1,495 pp**).Includes Transfer to and from Hotel in Athens.

**REGISTER FOR THE BIBLE PASSAGES EXCURSION PACKAGE AND AIRFARE OPTIONS AT [WWW.BIBLEPASSAGES.NET](http://WWW.BIBLEPASSAGES.NET) FOR MORE INFORMATION CALL US - 512.695.5099**

\*\*\*Not shown in the itinerary above are on-site devotionals, onboard education seminars, times of singing together, and other faith-building opportunities provided by the Bible Passages team. As is the case with this type of trip, the itinerary and schedule may change. The Bible Passages team will be on site and available at all times to guide the group regardless of changes made by Celebrity or the excursion team.